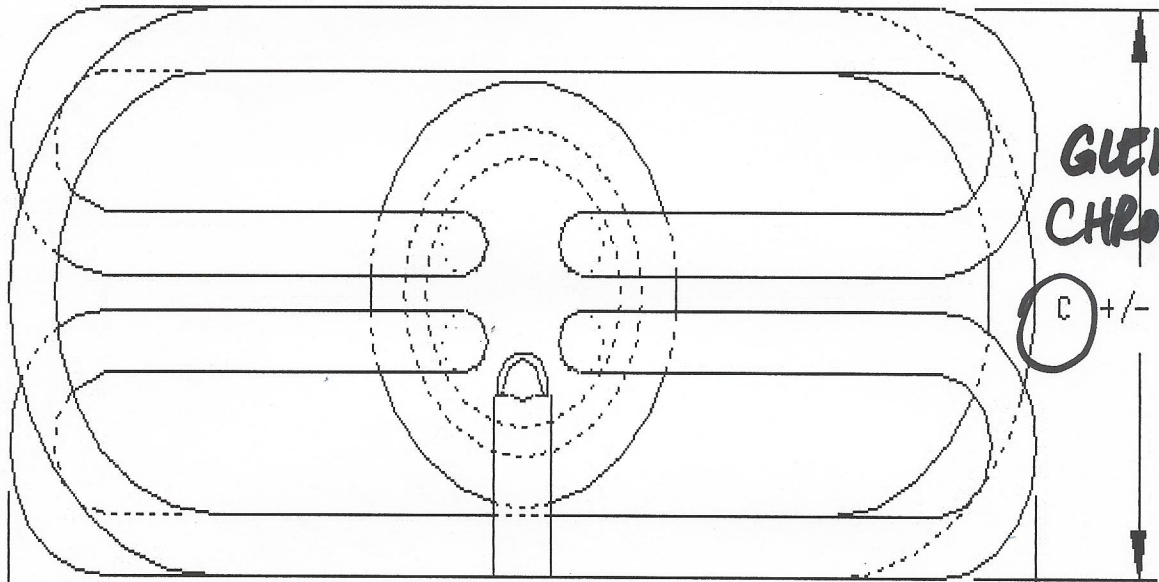


GLENN ELECTRIC VS. CHROMALOX (GSU-302-CT) TTUH-CO-30



GLENN = 3"
CHROM = 3 1/16"

(C) +/- 1/8"

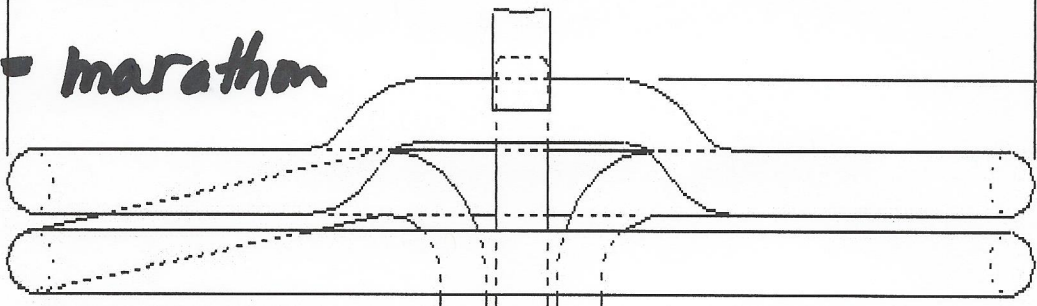
CHROM = 6 3/4"

GLENN = 7 1/2"

(A) +/- 1/4"

Sheath
COPPER = CHROM.

S.Steel = marathon



GLENN
1 3/8"

(B) CHROM =
2 1/8"

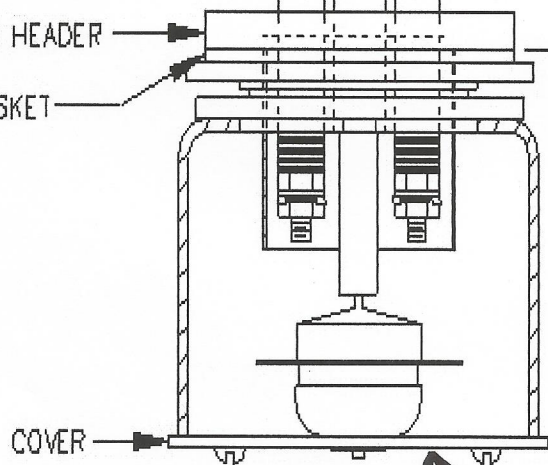
BRASS HEADER
GASKET

2-3/8" DIA. HOLE
REQ'D. MINIMUM

GLENN

(D) 2 25/32"

CHROME = 2 1/16"



COVER

\$495

CHROMALOX
PRICE PCN 256102

std. 4" octagon or
square conduit box