

INSTALLATION INSTRUCTIONS--URN HEATER (IMMERSION HEATER) WITH THERMAL CUT-OUT

Using only a flathead screwdriver and a hex driver, the QUIK-LOK brass header unit makes the urn heater installation quick and simple. The clamping mechanism is on the OUTSIDE of the conduit box, which reduces the likelihood of an electrical wiring issue.

Diagram #1 Urn Heater

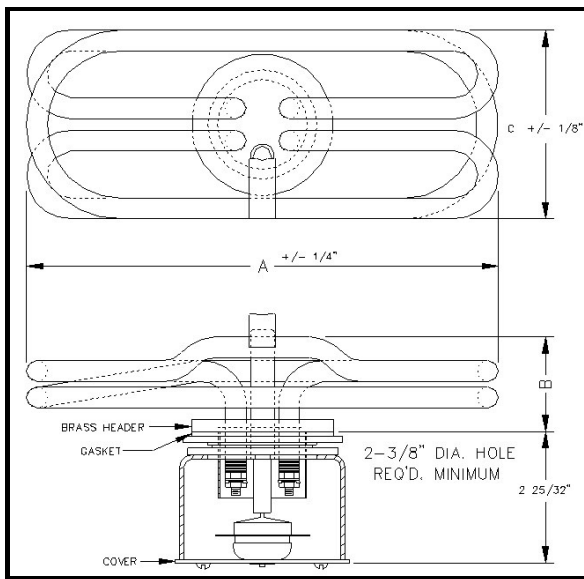


Diagram #2 Urn Heater Clamping Mechanism

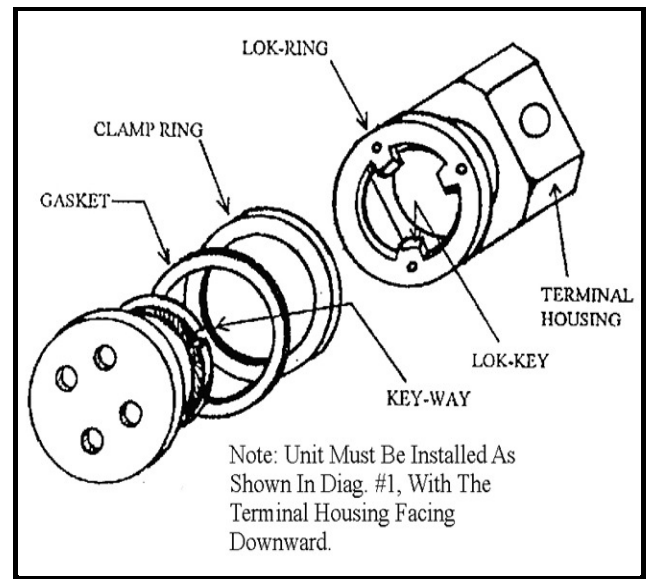


Diagram #3 Thermal Cut-Out



1. Remove the terminal cover, loosen the (3) slotted hex head lok-screws and turn the terminal housing until the lok-keys are aligned with the corresponding key-ways. Remove the urn heater **terminal housing & clamp-ring** subassembly only—be sure to leave the gasket and cut-out in place.
2. Install immersion heater with gasket through hole in container. This clamping unit is designed for a 2-7/16" diameter hole in the bottom of a tank with up to a 0.101" wall thickness, (0.5" wall thickness option by special request).
3. Install clamp-ring and lok-ring/terminal housing assembly by pushing the lok-keys through the aligned key-ways and rotating the housing to hold/lock it in place.
4. With a hex-driver, tighten the (3) slotted hex head lok-screws, proceeding clockwise until screws are evenly tightened. **NOTE: NEVER adjust the two round head screws attaching the Lok-Ring to Terminal Housing!**