

JET Control Panel

Model F075526

TUTCO® SureHeat control panels provide safe and reliable operation of the JET Process Air Heaters. All controls are factory-configured specifically for use with TUTCO® SureHeat Air Heaters, ensuring optimum performance, and eliminating programming headaches and costly heater failures.

SUREHEAT JET CONTROL with RS-232 Temperature Controller

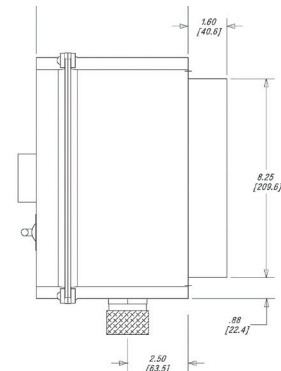
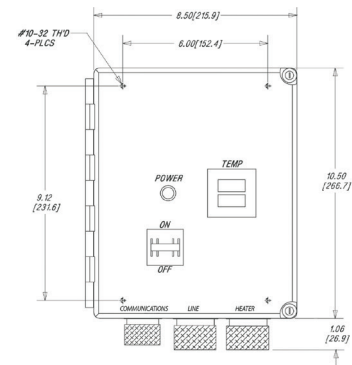
Temperature and power control for SureHeat JET 3kW or 8kW heaters.
Unit is same as F074722 except with RS-232 communications.
(Athena #16C-T-S-B-30-GH)

Electrical Rating 240VAC 35A 1PH 50/60Hz

Major Components

- 1 x HOFFMAN fiberglass NEMA 4X enclosure (dimensions as shown below.)
- 1 x 250VAC 40A circuit breaker
- 1 x ATHENA 16C 1/16 DIN digital PID loop controller w/DC voltage output, KTC input, RS-232 communications (16C-T-S-B-30-GH)
- 1 x ATHENA 86 high limit controller – pre-set for 300F
- 2 x 50A 600V Solid State Relays mounted to heat sink
- 1 x Aluminum heat sink (dimensions shown below) with cooling fins
- 1 x Power ON indicator light
- 1 x Terminal block (mounted to heat sink) for customer power wiring

All components to be UL recognized.



Model Number	Power kW	Maximum Volts	Maximum Amps
F075526	8.0	240/1	40

TUTCO Heating Solutions Group
500 Gould Drive
Cookeville, TN 38506
www.tutco.com

22 Industrial Drive
Exeter, NH 03833
Phone 1-800-258-8290
or 603-418-7648
www.tutcosureheat.com

TUTCO
HEATING SOLUTIONS GROUP

SureHeat